

Membership Application

Name

Address

Phone

Email

\$100+ Patron

\$50 Contributing

\$25 Family

\$10 Friend

\$ Kate Ingalls Children's Program Fund

This is a special new fund created as a tribute to beloved, long-time librarian, Kate Ingalls, who retired in January, 2019.

Friends of the Beverly Farms Library is a non-profit 501©3 organization and your membership dues are fully tax deductible.

Please make checks payable to:
Friends of the Beverly Farms Library.

Drop by or Mail to:
Beverly Farms Public Library
24 Vine Street
Beverly Farms, MA 01915



Built in 1916, The Beverly Farms Library provides a beautiful community space, literature and other educational resources for our local residents.

Friends of the Beverly Farms Library



"The Chair in Lincoln's Corner" – Mary Ellen Leekly

Please Support our Programs
by Becoming a Member!

The Friends support all our programs and museum passes.

The city of Beverly does not provide funding for our programs and museum passes.

BEVERLY FARMS LIBRARY
24 VINE STREET
BEVERLY FARMS, MA 01915
978-921-6066

WEBSITE: beverlypubliclibrary.org

EMAIL: bef@noblenet.org

What Do Membership Dues Support?

- **Children's Programs**

- 🎵 Music with Dara
- 🌿 Lawn Party
- 🎪 Nutcracker Tea
- ☀️ Summer Programs

- **Adult Programs**

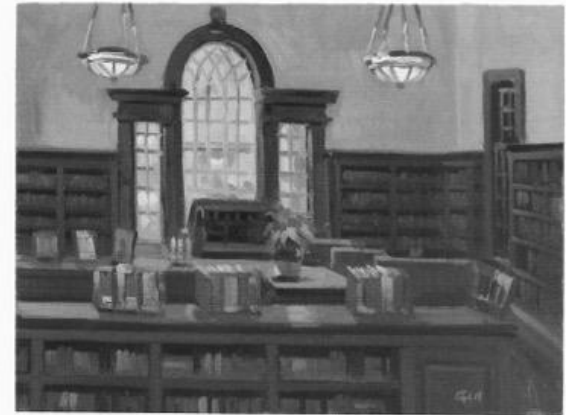
- 💡 History Talks

- **Museum Passes**

- ➡️ Boston Children's Museum
- ➡️ Cape Ann Museum
- ➡️ Museum of Fine Arts
- ➡️ Museum of Science
- ➡️ New England Aquarium (starting fall 2020)
- ➡️ Peabody Essex Museum
- ➡️ Isabella Stewart Gardner Museum

Without community support these programs would not exist!

Many thanks to our current members!



"Interior" – George Martin

Thank You to the Supporters of the Friends of the Beverly Farms Library!

Join us or renew your membership by filling out the form on the back of this panel.

You are key to the continuation of programs for our community. (Apologies if your name has been inadvertently omitted from our list and please let us know).